

# Interior Solutions



## Interior fit out and construction

**Providing commercial interior renovation and reconstruction, from dilapidation to total fit out, comprising construction, partitions, ceiling and flooring systems, joinery, finishes and mezzanine structures for:**

**Data Centres**

**Commercial Offices**

**Light Industrial Environments**



## Interior Solutions

**Workspace Technology's Interior Solutions division employs a range of skilled craftsmen in all disciplines associated with the total fit out and refurbishment of data centre, commercial office and light industrial environments. Our Interior Solutions division provides our customers with peace of mind due to our high levels of quality and service.**

Whether your requirements are for new build applications, refurbishment or expansion of an existing property, our approach will be consistent. We work in partnership with you to design and implement an effective solution which delivers high quality results. We aim to deliver a comprehensive BREEAM compliant building infrastructure. Our approach to projects simplifies deployment, reduces installation time and project complexity.

Workspace Technology's Interior Solutions division compliments our Building Systems and Data Centre Solutions teams, helping to deliver a total "workspace" solutions package.

Workspace Technology will undertake a thorough analysis of your workplace needs, reviewing company strategy and working practices. We will analyse the square footage and review open plan or cellular offices, departments, storage, breakout areas, meeting rooms and mezzanine structures. Our space planning will help you fit into your new building or existing space. We will review finishes and fittings and select textures and colours to create a fully functioning, yet inspiring environment.

Workspace Technology's Interior Solutions division provide a range of products and services including:-

**Interior Construction...creating the space through traditional construction, joinery, partitioning, suspended ceilings and finishes.**

**Flooring Solutions...versatile workspace flooring systems via a range of raised access, acoustic and hardwood flooring systems.**

**Modular Wall Systems...high performance modular construction provides a clean and fast alternative to traditional construction techniques.**

**Mezzanine & Structural Systems...realising increased space within your premises through mezzanine floor systems and associated structural works.**

**Storage and Furniture...creating the perfect workspace environment through a comprehensive portfolio of workplace furnishings and high density storage products to optimise your space and increase efficiency.**



# Interior Construction

## creating the space

**Workspace Technology delivers an extensive range of interior construction services to help create flexible and effective workspace environments. We will create a space that works to your budget and reflects your image, managing every step of the build process.**

Our interior construction services include:

- Partition & dry lining
- Suspended ceilings
- Standard and bespoke joinery
- Cavity barriers
- Demountable partitions
- Structural steel fire encasement
- Plastering & decoration.

### Partitioning & Dry Lining

Workspace Technology provides a range of partitioning solutions to meet the most demanding customer requirements including acoustics, fire protection, security and impact resistance. Our partitioning services include the supply and installation of:

- Standard commercial partitioning
- Fixed and industrial partitions
- Metal stud partitions
- Demountable Partitions.

Workspace Technology also supply and install dry walling solutions delivering excellent performance and outstanding value for money.

### Suspended Ceilings

Workspace Technology offer a comprehensive range of suspended ceiling tiles, grid and ancillary products including mineral fibre, glass fibre, gypsum and metal tiles in order to meet high performance demands.

Access panels, fire barriers, acoustic insulation solutions and air flow tiles are installed as required, providing a complete system for all types and scale of projects

ranging from data centres to office environments.

Workspace Technology offers well-known brands from industry leading manufacturers including Armstrong, Burgess, Danoline, Ecophon, OWA, Rockfon and USG.

Our ceiling services include:

- Acoustic ceilings
- Industrial ceilings
- Mineral fibre ceilings
- Plasterboard ceilings
- Metal ceilings
- Ceiling repairs.

### Joinery Solutions

Working closely with a wide range of manufacturers such as Venesta, Amwell, Thrislington, Corian, Laidlaw and Wilson Art amongst many others, Workspace Technology offer the very best in range, value and finishes.

Examples of some of the joinery products we install include:

- Doorsets
- IPS/WC cubicles
- Glazed screens
- Solid surfacing
- Bespoke counters/bars
- Skirting's/mouldings/panelling.

Our aim is to provide a complete finished interior ready for occupation of data equipment or personnel.



# Flooring Solutions

## versatile workspace flooring systems

**Workspace Technology's flooring solutions support the ever increasing demands of modern interior fit-out projects. Workspace Technology's experienced team provides advice from design concept to installation. We offer a range of leading flooring systems designed to meet the most demanding of new build or refurbishment briefs, delivering long lasting, hardwearing and flexible solutions.**

Workspace Technology's flooring systems provide solutions to meet a wide range of project requirements including:

- Raised Access Floors
- Acoustic Flooring
- Hardwood Flooring

### Raised Access Floors

By installing a raised access floor, Workspace Technology facilitates the versatility in development of technology and inevitable changes in customer requirements. Raised access floor solutions enable power, telecoms, data and other services to be precisely delivered where required and facilitate simple re-configuration of interiors.

Workspace Technology design, supply and install a range of raised access floor

systems to your exact specification and requirements.

### AccessFloor 600

Our AccessFloor 600 system is based on industry standard steel encapsulated access floor panels tested in accordance with the PSA MOB PS/SPU: 1992 and the newer BS/EN 12825:2001. The panels are supported on adjustable steel pedestals to achieve voids in excess of 1500mm. Panels are supplied bare, to receive on site finishing but can be specified pre-finished with HPL, vinyl or carpet as required. Within data centre and server room environments, Workspace Technology will install heavy grade panels pre-finished with antistatic vinyl and neoprene edge bands.

We can also supply removable stringers to accommodate high load & stability requirements.



## Flooring Solutions continued...

### MicroFloor 600

MicroFloor is a cost effective, functional secondary flooring system providing a fully accessible load bearing floor, suitable for new build and refurbishment projects. MicroFloor is widely specified and installed in a wide range of sectors including retail, leisure, commercial and residential projects throughout the UK and Europe.

The system consists of block pedestals which are bonded to the substrate with epoxy resin adhesive. Depending on the intended use of the building panels they can either be 30mm (light grade) or 38mm (medium grade) and are simply placed between the cap location fins, which assist in the accurate positioning to achieve a modular 600mm grid. Panels can be specified with a range of factory bonded finishes including carpet, vinyl, HPL, ceramic and natural stone, or left bare to receive a site applied finish.

### Hardwood Flooring

Workspace Technology source hardwood flooring direct from the best of the world's manufacturers. In addition to the more common timber, Workspace Technology can provide stained, treated and processed timbers to suit any aesthetic requirement.

Timber flooring is available in solid or engineered board, in different thicknesses, board widths, stave patterns and surface finish.

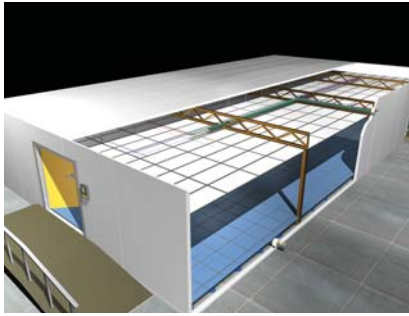
### Hardwood Sports Solutions

High-performance sports flooring can be specified for mixed or specialist use, to satisfy resilience, shock absorption and friction characteristics. All Workspace Technology sports floors conform to BSEN14904: 2006 \_ Surfaces for sports areas. Indoor surfaces are suitable for multi-sports use.

Workspace Technology's sports flooring solutions are generally comprised of three elements; under floor construction, hardwood floor and surface treatment. The combination of these elements determines the suitable uses for the floor, from active sports to dance and mixed use

### Comprehensive Finishes

A comprehensive choice of finishes from factory bonded and loose lay vinyl and carpet to high lustre marble, stone and glass finishes can be supplied. Finishes and designs are available to complement any interior design scheme or corporate guidelines.



# Modular Wall Systems

## high performance modular construction

**Modular composite construction products offer a clean and fast alternative to traditional techniques to create shell schemes.**

**These solutions are ideal for data centres, storage and clean room environments.**

### Modular Wall System benefits at a glance

- Lightweight high strength material
- Fast construction time
- Pre-finished surfaces
- Fire rating to suit application
- High security options
- Internal or external construction.

Modular wall system construction requires no wet trades such as plastering and painting, thereby causing minimal disruption to the surrounding environment. Ceiling/wall joints have preformed profiles that are simply dropped into place and fixed by steel angles. All joints are sealed with intumescent mastic (that swells under heat) between the panels and silicon mastic to seal against water.

Typically a small room can be constructed in a single day.

### High Performance Data Centre Solutions

Workspace Technology is an approved integrator for the ModuSec secure modular walling system designed for critical environments.

Traditional fire rated materials such as block, brick, plasterboard or mineral wool panels are rated under BS476/EN1364 to protect escape routes or building integrity to temperatures below 180°C for the rating period. However, whilst they may be rated for 60, 90 or even 120 minutes, critical temperatures for hardware and media will be very quickly exceeded – well within the rating period.

The European standard for computer room construction (EN1047-2) recommends a maximum rise of 50°C measured 100mm away from the protected face at 60 minutes.

ModuSec has a 'traditional' 90 minute rating, but more importantly, during a BS476 Pt 22 test with external temperatures rising to 950°C over 90 minutes, the internal temperature, (measured on the protected face) stayed within the critical temperature for media for 75 minutes, and hardware storage (50°C rise from around 15°C) for 83 minutes.



# Mezzanine & Structural Systems

## realising increased space

**Workspace Technology's Mezzanine & Structural systems help you realise the cubic volume in your existing building. Rent, rates and insurance costs can be a large portion of your company overhead. All possible usable space has to be utilised and a Mezzanine floor installation offers an inexpensive way to achieve this.**

Mezzanine structures create space into Commercial & Industrial environments for a variety of uses. Typically Warehouses, distribution centres, data centres, cold stores, manufacturing plants, airports, retail and commercial units are all locations where Mezzanine's structures ensure better use of space and so help clients to save money and increase profitability.

Whatever the application for a mezzanine floor, Workspace Technology design effective solutions to address floor space problems eliminating the cost or disruption of moving premises. By making the most efficient use of the space you already have, we can help your business operate as efficiently as possible and combat the ever increasing costs of rent, rates, or even relocating.

Workspace Technology's mezzanine floors are designed and manufactured in the UK to the highest standards to comply with the latest legislation. Our service includes a thorough detailed survey, structural design and preparation of engineering drawings. We can also help you obtain the necessary building regulations approval as well as project management.

Our stairway solutions offer options to part K or M of the building regulations, and include specialised feature stairways and balustrade, as required.

### Design

Workspace Technology is highly experienced in all aspects of mezzanine floor and support structure design. Structures with spans in excess of 20 metres are within our design and production capability.

Using the latest versions of AutoCad and Xsteel software, Workspace Technology ensures state-of-the-art structure design. Workspace Technology's structures are designed to comply with current British Standards for Design of Structural Steelwork and the current Fire Precautions Act.



# Storage and Furniture

## creating the perfect workspace environment

**Workspace Technology's storage and furniture solutions create a great workplace experience. We offer a comprehensive portfolio of workplace furnishings and high density storage products to optimise your space and increase efficiency.**

Space efficient design helps to meet the demands of the modern office environment to enhance the working experience.

### Storage

Workspace Technology offer high specification scalable storage solutions designed for maximum density storage of filing, archiving and stockroom consumables. Optimising efficiency, function and aesthetics are at the heart of our space planned designs.

Contemporary styling of our storage products offers a range of decorative finishes to match your interior design. We deploy modular industry standardised storage units to ensure complete interaction with standard filing formats and other manufacturers products. We will examine your storage requirements in detail, survey and produce plans and capacity charts to ensure you make the right decision for improved workplace efficiencies.

### Furnishings

Workspace Technology offers the complete range of workplace furnishings, from operator's chairs to workstations, board room, break out areas and canteen furniture. All products are offered in a range of finishes and specifications to match your workplace needs and design. We will examine your work processes and requirements and offer detailed plans to ensure maximum efficiency and optimisation of your work areas.



# Providing a service

## An Interactive Experience

**The expertise of Workspace Technology is associated with a quest for total quality, not just our products and services but which also extends to our employees. It is through the quest for total quality that Workspace Technology has achieved the prestigious ISO 9001 accreditation.**

Our service centric approach has been succinctly defined across a number of service definitions. These definitions map customer contact from project initiation through to final project sign-off and beyond, extended over the lifetime of the solution. The following outlines Workspace Technology's four service definitions.

### **Engage... design, planning and deployment services**

This represents Workspace Technology's approach to aspects of design, planning, deployment and project management services.

### **Consult... consultancy, audit & survey services**

Consult provides professional advice on all aspects of data centre design, deployment, sizing and availability and includes a range of survey and audit services.

### **Support... planned and contract maintenance services**

Workspace Technology offers a range of planned preventative maintenance and 24 x 365 callout service contracts to ensure critical system availability is maintained.

### **Intouch... online remote managed services**

Provides clients with a 24x365 on-line remotely managed data centre, server room and building infrastructure services.



# Commitment Quality & Safety

**The expertise of Workspace Technology is associated with a quest for total quality, not just our products and services but which also extends to our employees. It is through the quest for total quality that Workspace Technology has achieved the prestigious ISO 9001 accreditation.**

Workspace Technology deploys a philosophy of continual development and training across the company. The health, safety and welfare of our employees and customers is of paramount importance to Workspace Technology. The company is committed to implementing Health & Safety at Work and are an accredited CHAS approved contractor.



# Business Divisions Performance and Reliability

Workspace Technology delivers clients with a competitive advantage through the design and implementation of flexible and reliable Data Centre Solutions, Building Systems, Interior Solutions and in the provision of Professional Services. This one-stop approach to “workspace technology” is applied to commercial; manufacturing and data centre, server and communications room environments.

Our solutions offering is delivered through our focused business divisions:-

**Data Centre Solutions:** expert energy efficient data centre, server and communications room solutions and services.

**Building Systems:** intelligent building infrastructure services which include Communications, Power, Security and Cooling technology.

**Interior Solutions:** commercial interior renovation, dilapidation and fit out services including partitions, ceiling systems, raised access floors and finishes.

**Professional Services:** expert knowledge within project planning, design, consultancy, training, planned maintenance, customer support and remote managed services.

# Making the difference

## Connecting with our clients

**Workspace Technology's Interior Solutions division provides a range of commercial interior fit out and construction. By engaging with you and taking the time to understand your business and performance related issues, Workspace Technology is able to effectively address the demands of your business.**

Workspace Technology welcomes this opportunity to connect with you as a valued customer. We would like to share our vision and expertise through a partnership approach. Our ability to deliver integrated, scalable, energy efficient solutions has made us the preferred choice for many public sector and commercial businesses today.

Operating throughout the UK, Workspace Technology offers clients an enthusiastic and refreshing approach, combined with teamwork that takes performance and service to new levels of excellence.

Further details of Workspace Technology's products and services can be found at [www.workspace-technology.com](http://www.workspace-technology.com).



Approved "Endorser" EU "Code of Conduct on Data Centre Efficiency"



APC Elite Partner  
Data Centre Certified



Workspace Technology's "Commitment to help clients reduce their carbon footprint through the deployment of energy efficient technology and design".



Technology House, 8 Emmanuel Court,  
Reddicroft Sutton Coldfield,  
West Midlands B73 6AZ

**Tel : 0121 354 4894**  
Fax: 0121 354 6447

email : [sales@workspace-technology.com](mailto:sales@workspace-technology.com)  
**[www.workspace-technology.com](http://www.workspace-technology.com)**

Creating an effective workspace environment