

# Company Overview



## The Workspace Experience



Creating an effective workspace environment



# Overview

**Workspace Technology delivers clients with a competitive advantage through the design and implementation of flexible and reliable Data Centre Solutions, Building Systems, Interior Solutions and with the provision of Professional Services.**

This one-stop approach to “workspace technology” is applied to commercial; manufacturing and data centre, server and communications room environments.

Our solutions offering is delivered through our focused business divisions:

## Data Centre Solutions

expert energy efficient data centre, server and communications room solutions and services.

## Building Systems

intelligent building infrastructure services which include Communications, Power, Security and Cooling technology.

## Interior Solutions

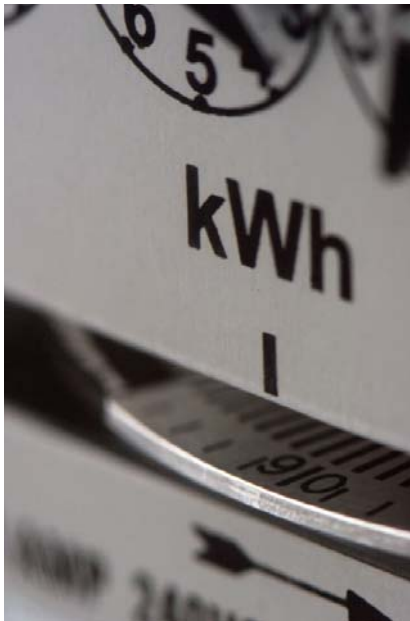
commercial interior renovation, dilapidation and fit out services including partitions, ceiling systems, flooring solutions and finishes.

## Professional Services

expert knowledge within project planning, design, consultancy, training, planned maintenance, customer support and remote managed services.

Workspace Technology's combined expertise enables clients to create an effective workspace environment. Workspace Technology ensures client projects are delivered with minimum risk facilitated by a successful team possessing an unrivalled wealth of knowledge, experience and expertise within the industry. Clients can expect an enthusiastic and refreshing approach, combined with teamwork that takes performance and service to new levels of excellence.

- A professional customer centric organisation
- A proven and highly skilled work force with a breadth of technical expertise and ability
- Unique end-to-end infrastructure & technology portfolio encompassing Data Centre Solutions, Building Systems, Interior Solutions & Professional Services
- Ability to service client's requirements across the UK
- Partnerships with recognised industry leaders
- Established management team enables us to take performance and service to new levels of excellence
- ISO 9001 Quality Approved Company
- CHAS Approved Principal Contractor
- EU Code of Conduct Endorser
- IS0140001 Accredited Company



# Data Centre Solutions

## Energy Efficient By Design

**Workspace Technology’s Data Centre Solutions division provide expert advice and services to deliver energy efficient data centre, server and communications rooms for public sector and corporate clients across the UK.**

Workspace Technology is committed to helping clients reduce carbon emissions through the deployment of “Best Practice” energy efficient technology and design.

Workspace Technology is proud to be an approved “Endorser” for the European Commissions “Code of Conduct for Data Centre Efficiency”

Workspace Technology delivers the European Unions Code of Conduct on Data Centre Efficiency “Best Practice” through our  methodology.

### Best Practice Design Principals

Measurement	Without measurement it can be hard to understand why and where energy performance is poor and how to improve it. It is a recommendation of the Carbon Trust that sub-metering of high energy consumption infrastructure is implemented.
“Right Size” Architecture	Modular, scalable power and cooling architecture that allows deployment as needed. This is the crucial element for improving data centre efficiency.
Efficient Cooling Technology	The implementation of modern energy efficient cooling technologies reduces operational energy overhead. The configuration of AC system set points, more appropriate to modern computer technology, will have a surprising contribution to data centre energy savings.
Clear Segregated Airflow	Ensuring a clear airflow path whilst eliminating the mixing of hot and cold air through the deployment of appropriate ducting, aisle containment and airflow management technology will contribute to significant reductions in the energy demand of the cooling system.
Efficient Room Layout	An efficient room layout will facilitate the deployment of appropriate cooling, allow for a modular growth strategy and assist airflow separation. Correctly positioned grille tiles will ensure airflow to equipment inlet positions.
Efficient UPS & Electrical Installation	The installation of modern modular transformerless UPS technology significantly improves efficiency and also saves on floor space at typical operating loads. The installation of well designed power paths combined with energy efficient lighting reduces energy consumption.



**Approved “Endorser”  
EU “Code of Conduct  
on Data Centre Efficiency”**





# Data Centre

## Architecture

**Workspace Technology has simplified and standardised our approach to the design and implementation of data centre, server & communications room environments. We deliver EcoDesign “Best Practice” solutions in line with the EU Code of Conduct for Data Centre Efficiency.**

Data Centre Infrastructure is the foundation upon which Information Technology (IT) and telecommunications networks reside. It is the “backbone” of the business, as its elements provide the power, cooling, physical housing, security, fire protection, and cabling which allow Information Technology to function. Workspace Technology applies “Best Practice” data centre design principles to maximise energy efficiency within the data centre.

Workspace Technology’s Data Centre Solutions division provides a range of services which include:

**Construction... creating the space**  
through planning, design, installation and construction services.

**Cooling... efficient cooling & airflow**  
deployed through a range of computer room air conditioning, free cooling technology, aisle containment and airflow management.

**Protection... mission critical environments**  
through the installation of fire detection and fire suppression systems.

**Technical... communications and technology**  
including high speed copper and fibre optical structured cabling and network technology.

**Engineering... power architecture**  
through LV switchgear, mechanical and critical distribution, PDU’s, power generators, UPS systems and intelligent rack distribution.

**Management... pro-active management**  
Environmental monitoring and security incorporating data centre management, environmental and physical security, monitoring and energy management solution.

## Build Options

**Micro Data Centre**  
Small Server Room, Communications Room & Wiring Closet, Infrastructure Solution

**Contemporary Data Centre**  
Medium, to large contemporary data centre design and build solutions

**Mobile Data Centre**  
Portable energy efficient data centre solutions

**Modular Data Centre**  
Flexible, scalable high performance modular data centre solutions.



# Building Systems

## Intelligent Building Technology

**Workspace Technology provides a range of intelligent energy efficient building infrastructure which includes, Communications, Power, Security and Cooling. Workspace Technology is committed to helping you reduce power consumption and carbon emissions, through integrated technology and intelligent building design.**

Typical projects for our customers across the UK include; office relocation, renovation and expansion. Our goal is to deliver to our clients a comprehensive energy efficient building infrastructure. Our approach simplifies deployment to reduce project installation time and complexity.

Workspace Technology employs a simple, standardised approach to the design and implementation of building infrastructure. We have identified a number of building blocks from which we deliver intelligent building infrastructure.

### **Communications Systems... creating communications pathways**

through design and installation of structured cabling, fibre optics, audio visual and TV/UHF cable distribution.

### **Power... power distribution and lighting**

systems for modular and reliable energy efficient electrical services.

### **Security... secure building environments**

through deployment of IP CCTV, Access Control, Door Entry, and Intruder Alarm installations.

### **Cooling... comfort cooling technology**

through deployment of energy efficient air-conditioning and heating systems.



# Interior Solutions

## Interior fit out and construction

**Workspace Technology's Interior Solutions division employs a range of skilled craftsmen in all disciplines associated with the total fit out and refurbishment of data centre, commercial office and light industrial environments. Our Interior Solutions division provides our customers with peace of mind due to our high levels of quality and service.**

Whether your requirements are for new build applications, refurbishment or expansion of an existing property, our approach will be consistent. We work in partnership with you to design and implement an effective solution which delivers high quality results. We aim to deliver a comprehensive BREEAM compliant building infrastructure. Our approach to projects simplifies deployment, reduces installation time and project complexity.

Workspace Technology's Interior Solutions division compliments our Building Systems and Data Centre Solutions teams, helping to deliver a total "workspace" solutions package.

Workspace Technology will undertake a thorough analysis of your workplace needs, reviewing company strategy and working practices. We will analyse the square footage and review open plan or cellular offices, departments, storage, breakout areas, meeting rooms and mezzanine structures. Our space planning will help you fit into your new building or existing space. We will review finishes and fittings and select textures and colours to create a fully functioning, yet inspiring environment.

Workspace Technology's Interior Solutions division provide a range of products and services including:

### **Interior Construction... creating the space**

through traditional construction, joinery, partitioning, suspended ceilings and finishes.

### **Flooring Solutions... versatile workspace flooring**

systems via a range of raised access, acoustic and hardwood flooring systems.

### **Modular Wall Systems... high performance modular construction**

provides a clean and fast alternative to traditional construction techniques.

### **Mezzanine & Structural Systems... realising increased space**

within your premises through mezzanine floor systems and associated structural works.

### **Storage and Furniture...creating the perfect workspace environment**

through a comprehensive portfolio of workplace furnishings and high density storage products to optimise your space and increase efficiency.



# Professional Services

## Expert Knowledge and Support

**Workspace Technology's operational & professional services are driven by our customer experience. Throughout all stages of contact, our processes and procedures are aligned to ensure that expectations in design accuracy, systems interpretation and installations, quality, service and support are maintained.**

Our service centric approach has been succinctly defined across a number of service definitions. These definitions map customer contact from project initiation through to final project sign-off and beyond, extended over the lifetime of the solution. The following outlines Workspace Technology's service definitions.

### **Engage... design, planning and deployment services**

This represents Workspace Technology's approach to aspects of design, planning, deployment and project management services.

### **Consult... consultancy, audit & survey services**

Consult provides professional advice on all aspects of data centre design, deployment, sizing and availability and includes a range of survey and audit services.

### **Support... planned and contract maintenance services**

Workspace Technology offers a range of planned preventative maintenance and 24 x 365 callout service contracts to ensure critical system availability is maintained.

### **Intouch... online remote managed services**

Provides clients with a 24x365 on-line remotely managed data centre, server room and building infrastructure services.





# Commitment

## Quality & Safety

**The expertise of Workspace Technology is associated with a quest for total quality, not just our products and services but which also extends to our employees. Workspace Technology are an accredited ISO 9001 company.**

Workspace Technology deploys continual development and training philosophy across the company. The health, safety and welfare of our employees and customers is of paramount importance to Workspace Technology. The company is committed to implementing Health & Safety at Work and is an accredited CHAS approved contractor.



# Making the difference

## Connecting with our clients

**The value that Workspace Technology can deliver to the customer experience is our complete understanding of the infrastructure solutions market, its products and services. By engaging with you and taking the time to understand your business and performance related issues, Workspace Technology is able to effectively address the demands of your business.**

Workspace Technology welcomes this opportunity to connect with you as a valued customer. We would like to share our vision and expertise through a partnership approach. Our ability to deliver integrated, scalable, energy efficient solutions has made us the preferred choice for many public sector and commercial businesses today.

Operating throughout the UK, Workspace Technology offers clients an enthusiastic and refreshing approach, combined with teamwork that takes performance and service to new levels of excellence.

Further details of Workspace Technology's products and services can be found at [www.workspace-technology.com](http://www.workspace-technology.com).



Approved "Endorser" EU "Code of Conduct on Data Centre Efficiency"



APC Elite Partner  
Data Centre Certified



Workspace Technology's "Commitment to help clients reduce their carbon footprint through the deployment of energy efficient technology and design".



Technology House, 5 Emmanuel Court,  
Reddicroft Sutton Coldfield,  
West Midlands B72 1TJ

**Tel : 0121 354 4894**

Fax: 0121 354 6447

email : [sales@workspace-technology.com](mailto:sales@workspace-technology.com)

**[www.workspace-technology.com](http://www.workspace-technology.com)**

Creating an effective workspace environment