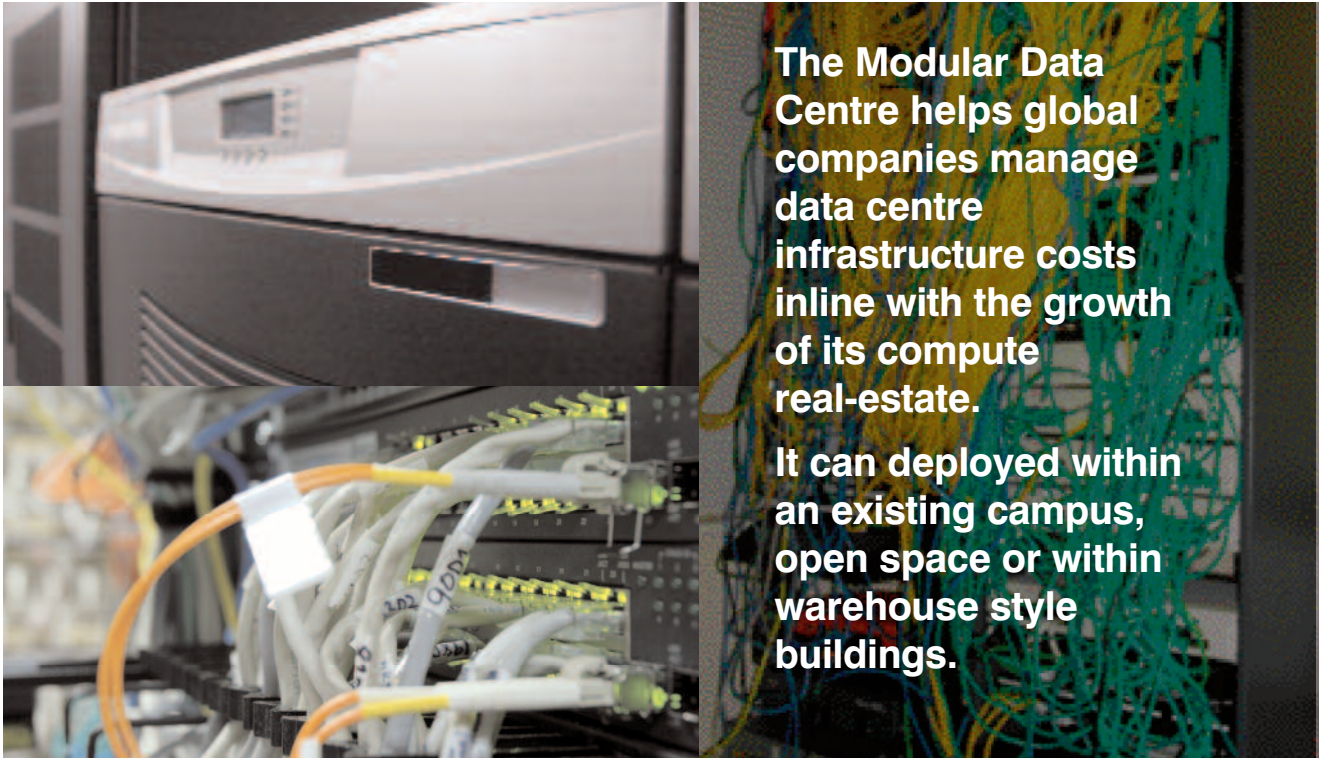


Data Centre Solutions...energy efficient by design



Modular Data Centre

Flexible, scalable high performance modular data centre solutions



The Modular Data Centre helps global companies manage data centre infrastructure costs inline with the growth of its compute real-estate.

It can be deployed within an existing campus, open space or within warehouse style buildings.

Modular Data Centre

Flexible, scalable high performance modular data centre solutions

Modularity is paramount in the next generation of data centre facilities. It is essential that future data centres support the ever increasing demands of virtualized, high density, cloud computing ICT solutions. The days of building huge data centre facilities that cost hundreds of millions of pounds with years to complete may be coming to an end. By the time the facilities are built the technology is obsolete.

The ultimate goal is to build a dynamic data centre solution capable of rapid change to meet market demands.

Workspace Technology's Modular Data Centre solution directly meets the demands required by new data centre infrastructure. The Modular Data Centre provides customers with complete flexibility, delivering a scalable approach to data centre planning and design, eliminating the need for traditional "bricks and mortar" buildings.

Modular data centre based architecture is rapidly gaining acceptance in the market. The scalable approach offered by Workspace Technology's Modular Data Centre strategy reduces time to deploy to weeks instead of many months for a traditional infrastructure and helps align costs more closely to compute deployments. Typically a Modular Data Centre solution will reduce overall capitol expenditure compared to a traditional large scale data centre by over 40%.

Benefits of Modular Data Centre Solutions

- Reduced Capitol Outlay
- Rapid System Deployment
- Scalable Alternative to Traditional Large Scale Facility
- Pre Engineered Technology
- Agile Future Proofed Design to meet the increasing demands of compute technology
- Creates a green data centre environment





Modular Data Centre Architecture

Shared Service Pods

Workspace Technology's approach to modular data centre design is simple yet effective.

We offer a selection of core data centre shared services components including:

- Mains Intake Pod
- Mechanical Services Power Pod
- UPS & Critical Services Power Pod
- Generator Pod

The core shared services data centre pods can be deployed and interconnected in a number of topology's depending on the required "Tier" rating of the data centre facility. Shared services pods should be sized to meet the design demands of the maximum pod count. Core shared service systems can in turn be duplicated to further expand the Modular Data Centre facility.

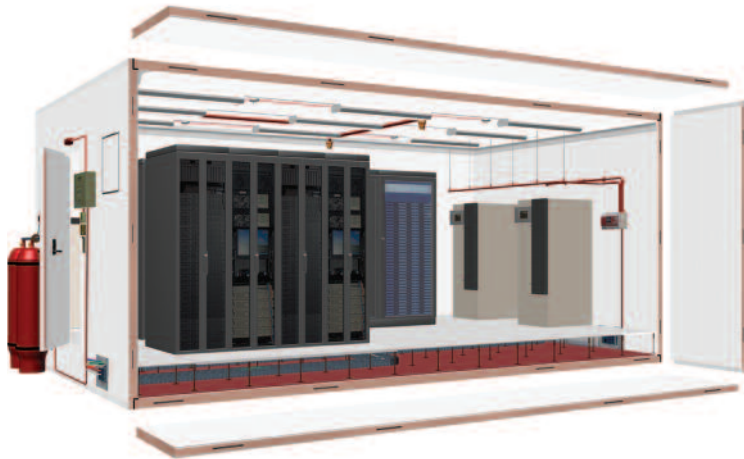
The Modular Data Centre can be built to either Tier 2 or Tier 3 data centre design standards, depending on client specification and availability requirements.

Modular Data Centre Pods

Workspace Technology introduced its existing "Mobile Data Centre" (MDC) solution in 2008. The MDC pod is the fundamental building block for "modular" data centre deployments. Workspace Technology's Modular Data Centre architecture allows MDC pods to pre-engineered, tested and commissioned prior to delivery with commissioning on site. The modular building block approach simplifies the ability of a business to expand its data centre facility.

Unlike containerized data centre solutions offered by a number of global I.T players which are based on standard 2.4m width containers, Workspace Technology's Modular Data Centre platform can be built with widths starting from 3.5m. The design enables unrestricted and flexible front and rear equipment rack access.

The Modular Data Centre system is designed specifically to support a range of low, medium and high density rack applications. Typical Modular Data Centre pods can support 10 to 12 racks with design densities ranging from 5Kw to 30Kw per rack.

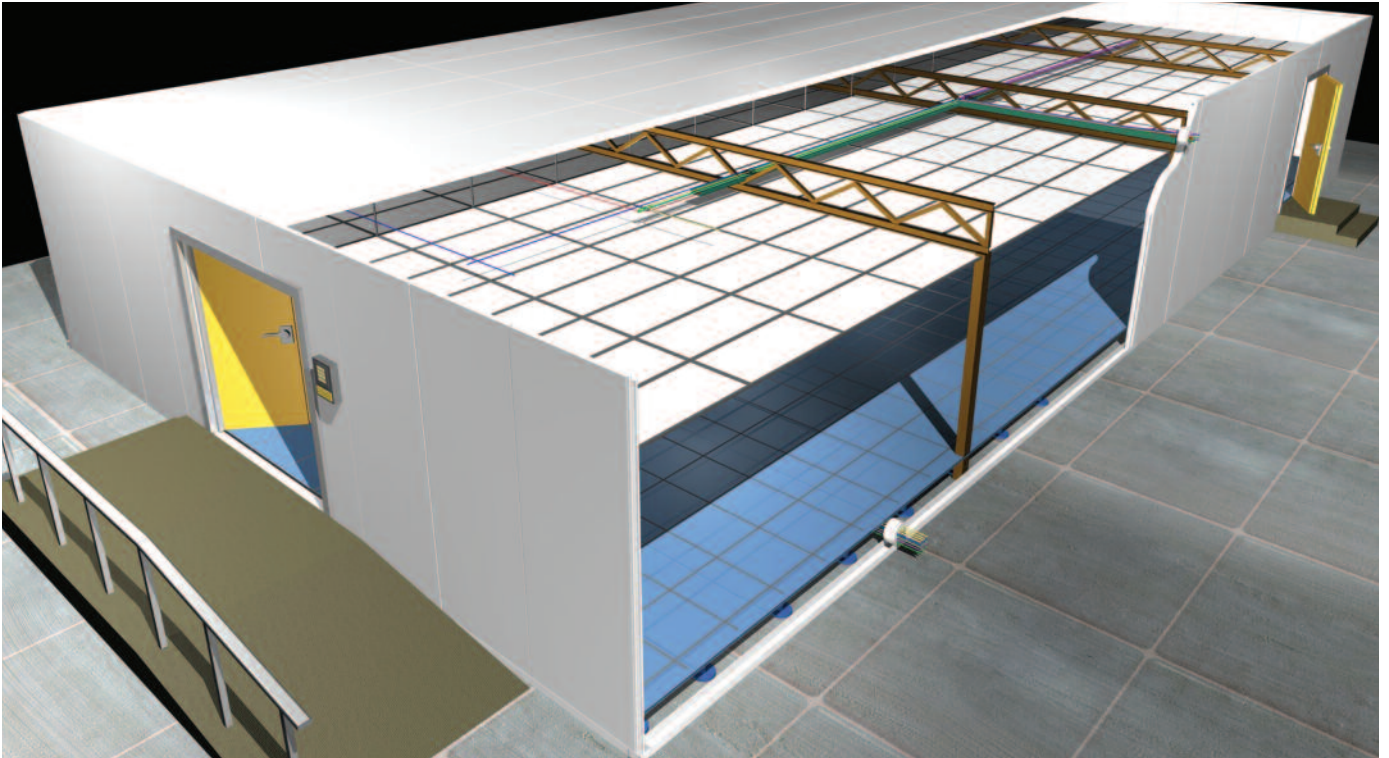


Workspace Technology offers a number of cooling technology options including rear rack system combined with chilled water, adiabatic evaporative free air cooling and heat exchange technology. The deployment of the 'FreeCool' evaporative cooling option reduces installation cost and helps to reduce power emissions. When combined with evaporative free cooling, Workspace Technology's Modular Data Centre pods can deliver Power Usage Effectiveness (PUE) ratings of 1.2 to 1.1, significantly exceeding current industry average expectations of 2.6.

A Modular Data Centre solution can be deployed within an existing campus, open space or within warehouse style buildings.

Pod - Key Features

- "Server Ready" – pre-engineered, and wired ready, for instant deployment of servers.
- Self contained system, complete with cabinets, cooling, UPS and power distribution
- Based on Workspace Technology's "EcoDesign" best practice design principles, to reduce carbon emissions through design and technology
- Easy to deploy with minimum onsite preparation, for immediate functionality
- Modular "right size" designs
- Resilient N+1 design Options
- Pro-Inert ozone friendly Fire Suppression technology
- The Data Centre Pod is a fully "self-contained" data centre.



Monitoring & Management

Workspace Technology deploy a complete monitoring and management infrastructure supporting IT assets within the Modular Data Centre solution. Management technology is deployed through APC's InfraStruxure® Management Software delivering holistic management of the entire Modular data centre ecosystem from utility power quality to chiller temperature, from generator fuel level to UPS tolerance and to associated server application.

InfraStruxure Management Software's end-to-end management approach allows the modular data centre to run more smoothly on a daily basis, with its built-in business tools providing short and long-term planning, ensuring capital, operational costs and energy use meet budget performance.

Modular Data Centre Application Summary

- Main Data Centre Deployment
- Disaster Recovery and Business Continuity
- Cost Effective Data Centre Expansion
- Mobile Data Centre and Server Room Facilities
- Excellent alternative to a bricks and mortar buildings

Workspace Technology's Modular Data Centre solution creates a true "pay as you grow" model for large data centre infrastructures.

The Modular Data Centre helps global companies manage data centre infrastructure costs inline with the growth of its compute real-estate.

About Workspace Technology

Workspace Technology's Data Centre Solutions division provide expert data centre, communications and server room solutions and services for public sector and corporate clients across the UK.

Workspace Technology is proud to be an approved "Endorser" for the European Commissions "Code of Conduct for Data Centre Efficiency" Workspace Technology is committed to help clients reduce their carbon footprint through the deployment of "Best Practice" energy efficient technology and design, for new and existing data centre environments.

Further details of Workspace Technology's products and services can be found at www.workspace-technology.com.



Approved "Endorser" EU "Code of Conduct on Data Centre Efficiency"



APC Elite Partner
Data Centre Certified



Workspace Technology's "Commitment to help clients reduce their carbon footprint through the deployment of energy efficient technology and design".



Technology House, 8 Emmanuel Court,
Reddicroft Sutton Coldfield,
West Midlands B73 6AZ

Tel : 0121 354 4894

Fax: 0121 354 6447

email : sales@workspace-technology.com

www.workspace-technology.com

Creating an effective workspace environment